

THE ANNALS

AND

MAGAZINE OF NATURAL HISTORY.

[TENTH SERIES.]

No. 12. DECEMBER 1928.

LXVIII.—*New Oriental Curculionidæ.*

By GUY A. K. MARSHALL, C.M.G., D.Sc., F.R.S.

THE types of the following new species will all be deposited in the British Museum.

Subfamily OTIORRHYNCHINÆ.

Cyphicerus humeralis, sp. n.

♂ ♀. Derm black, with dense dark brown scaling, except the following parts which are green: the greater part of the head and rostrum, the sides of the prothorax (more or less enclosing a variable dark patch) and a narrow median stripe which is usually reduced to a small elongate spot in the middle of the base, the scutellum, and numerous variable and irregular spots on the elytra, which are more scanty on the disk, but dense and more or less confluent at the sides and on the apical declivity.

Head with the eyes almost flattened; the forehead plane, finely striolate (partly hidden by scaling), its width much greater than the length of an eye (3:2). *Rostrum* as long as (♂) or a little shorter than (♀) its basal width; the posterior margin of the epistome obtusely carinate; the dorsal area almost plane, the anterior transverse ridge not

very distinct, the median carina prominent, the dorso-lateral ones parallel behind. *Antennæ* black or piceous, fairly densely clothed with pale green scaling; the scape stout, somewhat compressed, moderately curved, with the external apical angle slightly produced and the setæ recumbent; the funicle with joint 2 about 1.25 times the length of 1, joints 4-7 equal and 3 a little longer, each with a single whorl of setæ. *Prothorax* with the sides gently rounded, of equal width at base and apex, broadest about the middle; the base subtruncate, the dorsal anterior margin evidently sinuate, the postocular lobes broadly rounded and with minute vibrissæ; the dorsum even and with large close punctures, the interspaces being finely and shallowly punctate, and with a very shallow rounded impression on each side behind the middle on the edge of the green lateral stripe. *Elytra* with the shoulders rounded but distinctly projecting laterally, the apices separately rounded; the striæ deeper towards the base, the punctures being partly hidden by the scaling, striæ 5 and 6 markedly divergent basally, the intervals each with a single row of short pale recumbent setæ.

Length 5.2-7.2 mm., *breadth* 2.2-3.0 mm.

INDIA: Nilgiri Hills, 2 ♂♂, 2 ♀♀, 1894 (*Sir G. F. Hampson*); Nilambur, Madras, 5 ♀♀, vi.-vii. 1925 (*S. N. Chatterjee*).

From Nilambur the species was reported as defoliating teak-trees in plantations.

From nearly all the previously described species of *Cyphicerus* the present one can be distinguished by the lateral projection of the shoulders of the elytra and by the strong divergence of striæ 5 and 6 at the base; the latter character occurs, however, in another Indian species, "*Corigetus*" *emarginatus*, Fst., 1897, but this species differs also from *humeralis* in having two green stripes on each side of the prothorax, the dorsum of the elytra bears alternate light and dark stripes, the scape of the antennæ is subcylindrical, etc.

Genus CYPHICERINUS, nov.

This genus is proposed for certain species hitherto included in *Cyphicerus*, but which differ from it in the following combination of characters:—

Cyphicerinus.—Mentum with a transverse row of four long erect setæ; at the apex of the rostrum the carinate margin of the epistome is not lower than the adjoining inner margin of the scrobe. The funicle of the antennæ is clothed only with setæ and not with true scales. The general

sculpture is coarser, and the scaling is thinner and more patchy.

Cyphicerus.—Mentum with only two setæ; the inner margin of the scrobe distinctly higher than the margin of the epistome. The funicle of the antennæ is at least partly clothed with true scales. The general surface is smooth and densely squamose.

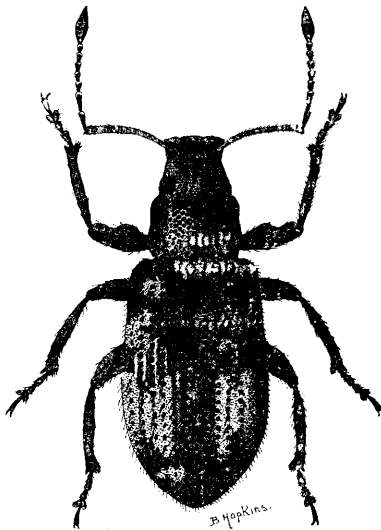
Genotype, *Myllocerus hirsutus*, Desbr., 1891.

Other species referable to this genus are *Cyphicerus nepalensis*, Fst., 1890, and *C. venalis*, Fst., 1895.

Cyphicerinus tectonæ, sp. n. (Fig. 1.)

♂ ♀. Derm rather shiny black or piceous, thinly and unevenly clothed with grey or brownish scaling, and usually with an irregular variable lighter transverse band behind

Fig. 1.



Cyphicerinus tectonæ, sp. n.

the middle of the elytra, which is more or less interrupted on intervals 1, 2, and 3, and is usually broader and more distinct in ♀.

Head with shallow scattered punctures that are hidden by scaling; the frons flattened, its width somewhat greater than the length of an eye, and with a deep elongate median

fovea. *Rostrum* rather shorter than its basal width (5 : 6), narrowed from the base to the antennæ, and sharply dilated at the apex; the median dorsal area flat or somewhat depressed, with three fine subparallel carinæ, of which the median one is not always quite straight, having beside it posteriorly a shallow stria that runs into the frontal fovea, this stria being sometimes on the right and sometimes on the left of the carina; the lateral areas with two sulci running from the upper angle of the scrobe to the eye and longitudinally striolate inferiorly. *Antennæ* castaneous; the scape subcylindrical, gently curved, gradually clavate, set with stout suberect curved setæ, and with the external apical angle projecting; the funicle with joint 2 a little longer than 1 (4 : 3), the remainder subequal and each with a single whorl of setæ. *Prothorax* moderately rounded at the sides, widest slightly behind the middle, of equal width at base and apex, feebly bisinuate at the base, with the apical margin shallowly sinuate, and the postocular lobes strong and with sparse fine vibrissæ; the dorsum with the coarse deep punctures partly obscured by the scaling and with a distinct shallow post-median impression on each side; the setæ much shorter than those on the elytra and suberect. *Elytra* separately rounded at the base, with the shoulders roundly rectangular, slightly widened behind the middle in ♂, more so in ♀; the striæ with large subquadrate punctures, which diminish rapidly behind, striæ 5 and 6 diverging at the base; the intervals about as wide as the striæ in the basal half, slightly convex, devoid of granules, and each with a row of stout erect setæ. *Legs* piceous, with sparse elongate scales and short pale subrecumbent setæ.

Length 4·2–5·0 mm., *breadth* 1·7–2·0 mm.

INDIA: Rahatgaon, Hoshangabad, Central Provinces, 5 ♂♂, 6 ♀♀, 17. vii. 1926 (*S. N. Chatterjee*).

The collector records that teak-trees (*Tectona grandis*) were being defoliated by adults of this species.

Nearly allied to *C. hirsutus*, Desbr., which is normally a much larger insect (length 5·0–7·5 mm.); the forehead is flatter and its width is much greater than the length of an eye (7 : 5); the rostrum has no median stria; the intervals of the elytra are irregularly set with fine sparse granules, the scales are more elongate, and the setæ relatively shorter and less erect.

Subfamily *CLEONINÆ*.*Pachycerus cynoglossi*, sp. n.

♂ ♀. Derm black, slightly shiny; the elytra thinly clothed with small setiform grey scales, which are somewhat whiter here and there, producing a faintly mottled appearance; the prothorax with a narrow median line of dense setiform scales which is dilated in the middle into a diamond-shaped marking enclosing a shiny bare patch, and on each side two narrow lines of similar scales forming a distinct X.

Head very sparsely squamose, except for a dense ring round the eyes; the forehead confluent punctate and with a low rugose elevation above each eye. *Rostrum* very stout and angular, vertically flattened at the sides in the basal half, and only slightly dilated at the apex; the dorsum flattened and rugosely punctate, with two irregular broad furrows in the basal half, the dorsal margins being obtusely costate; the declivous apical area with two well-marked furrows delimiting the elongate triangular epistome; the lateral ante-ocular areas coarsely rugose. *Prothorax* nearly as long as broad, parallel-sided from the base to the middle, thence roundly narrowed, and with a tubular apical constriction; the postocular lobes broad; the dorsum gently convex longitudinally, highest in the middle, finely rugulose throughout, and set with numerous irregular low shiny granules, which are of very unequal sizes and more or less confluent; the shiny patch in the median diamond-shaped marking bearing a longitudinal furrow. *Elytra* oblong-ovate, much as in *P. varius*, Hbst., but less narrowed at the apex; the striæ distinct and regular, containing fairly close punctures that are a little wider than the striæ and gradually diminish towards the apex; the intervals broader than the striæ, flat, finely rugulose, and each with a row of very small granules throughout, these being more conspicuous near the base, and interval 3 with a slight granular basal elevation; the suture with a small elevation just behind the scutellum surrounded by a very shallow impression. *Legs* rugulose, with fairly dense grey scaling and bare black spots; the tibiæ with only a single spine at the inner apical angle; the hind tarsi with joint 2 about as long as 3. *Underside* with grey scaling and numerous irregular bare spots each of which contains a puncture.

Length 9.0–11.5 mm., *breadth* 3.2–4.0 mm.

INDIA : Pusa, Bihar, 2 ♂♂, 7 ♀♀, vii.–viii. 1922 (Haq).

The specimens were bred from larvæ boring in the roots of *Cynoglossum lanceolatum*.

This species belongs to the subgenus *Rhabdorhynchus*, Mot., 1860, in which the lower surface is irregularly mottled. It closely resembles in general appearance *P. varius*, Hbst., which differs *inter alia* as follows: the ante-ocular area of the rostrum is smooth and rather sparsely punctate; the prothorax is distinctly broader than long and rather strongly rounded laterally; the tibiæ have two sharp spines at the inner apical angle, and joint 2 of the hind tarsi is distinctly longer than 3.

Subfamily HYLOBIINÆ.

Dyscerus kalshoveni, sp. n.

♂ ♀. Colour red-brown, the elytra rather paler, with a quadrate piceous patch slightly in front of the middle covering striæ 1 and 2 for a length of two punctures, a broad indefinite transverse piceous band (with its anterior margin sinuate) at about the middle extending from stria 3 to the lateral margin, and bordering this band in front a rather narrower ill-defined curved band formed of dense whitish setiform scales, a narrower indefinite sinuous macular band of similar scales across the top of the declivity, and a small transverse patch of whitish scales behind the posterior calli, the remainder of the elytra being thinly clothed with fulvous setiform scales and a few grey ones here and there.

Head with sparse fulvous setæ, the vertex with fine confluent punctation; the frons coarsely striolate and with a deep median fovea, exceptionally broad, the width being greater than the length of an eye. *Rostrum* straight and usually held vertically downwards; in ♂, as long as the head and pronotum, rugosely punctate throughout, the punctures in the basal half longitudinally confluent, with a very deep sulcus just above the scrobe from the base to beyond the middle, and a much shallower one above that; in ♀, longer than head and pronotum (4:3) and with the punctures rather smaller and less rugose. *Antennæ* with the scape unusually short, its apex separated from the eye by nearly one-third of its length; the funicle with joint 1 about equal to 2+3, 3-6 equal and strongly transverse, 7 broader and closer to the club than usual. *Prothorax* as long as broad, parallel-sided in the basal third, then gradually narrowing to the apex without any constriction; the apical margin

gently arcuate and feebly sinuate in the middle, the postocular lobes strongly developed, and the base bisinuate; the dorsum distinctly convex longitudinally and highest in the middle, strongly convex transversely, closely set with large rounded granules that become flattened towards the apex, and with a variable abbreviated median carina and a shallow impression in the middle of the base; each granule with a single short recumbent fulvous seta, and a few more in the interstices. *Scutellum* semicircular, sloping forwards, and shallowly impressed in the middle. *Elytra* oblong-ovate, widest at the rather prominent shoulders, very gradually narrowing behind, jointly rounded at the apex, and with the posterior calli rounded off and not very conspicuous; the striæ distinct and with regular quadrate punctures that diminish rapidly behind, the septa in the disk being narrower than the intervals, which are slightly convex and irregularly set with sparse flattened granules, interval 3 being feebly costate and bearing an elongate granular elevation near the base; the humeral calli also set with close flattened granules. *Legs* finely rugulose; all the tibiæ with a sharp tooth at the inner apical angle.

Length 9.6–11.4 mm., *breadth* 3.9–4.5 mm.

JAVA: Mt. Preanger, 1 ♂, 2 ♀ ♀, vii. 1927 (L. G. E. Kalshoven).

Dyscerus naso, sp. n.

♀. Colour black, rather thinly clothed with fulvous setiform scales, which are somewhat denser towards the base of the elytra and form a very indefinite, strongly angulated fascia across the top of the declivity.

Very closely related to *D. kalshoveni*, sp. n., but differing from it *inter alia* in the following characters:—*Head* with the median fovea placed further forward, being virtually on the base of the rostrum. *Rostrum* rather smoother and more shiny. *Prothorax* subconical, widest at the base and gradually narrowing anteriorly, with the sides much less rounded and without any apical constriction; the dorsum with much smaller and more separated granules, which are replaced by punctures at the apex. *Scutellum* bare and very shiny. *Elytra* wider at the shoulders, which project laterally in an obtuse angle, more distinctly arcuate at the base, separately rounded at the apex, and with the posterior calli very prominent and angular; the dorsum more rugosely sculptured, with the punctures much larger and fewer, but

becoming almost obliterated on the declivity, and with the septa about as broad as the intervals.

JAVA: Tjibodas, 1 ♀, v. 1916 (*H. C. Robinson*).

The only described *Dyscerus* that is nearly related to these two species is "*Hylobius*" *rectirostris*, Roelofs, from Japan, and together they form a well-marked group characterized by the very broad frons, the long straight rostrum, the short antennal scape, the granulate pronotum, and by the presence of a sharp tooth at the inner apical angle of the tibiæ.

D. rectirostris differs from the other two species in having the prothorax slightly transverse, strongly rounded at the sides, shallowly constricted at the apex, much more strongly convex longitudinally, and without any median carina; the scutellum is strongly convex and elevated; the elytra are proportionately much shorter and broader, subparallel-sided from the shoulders to beyond the middle, with the shoulders not projecting laterally and the posterior calli sharply angulate; and the tooth at the inner apical angle of the tibiæ is small and indistinct on the anterior pairs and obsolete on the hind pair.

Subfamily *ERIRRHININÆ*.

Derelomus cervicalis, sp. n.

♂ ♀. Pale yellow or very pale testaceous-brown; the head and rostrum dark brown; the pronotum with a broad dark brown median stripe, which is broadest much beyond the middle and usually narrows in front and behind.

Head with dense subconfluent punctation, the forehead slightly flattened. *Rostrum* a little longer than the pronotum in ♂ and slightly longer still in ♀, with five fine low carinæ, which are rather less distinct in ♀. *Antennæ* inserted at about one-fourth from the apex in both sexes, pale testaceous; joint 1 of the funicle much longer than any of the others, about as long as 2-4, 3-7 transverse. *Prothorax* slightly broader than long, widest at the base and gradually narrowing anteriorly, deeply constricted near the apex, so that the apical angles project obtusely; the dorsum with fine rugulose confluent punctation throughout and with a shallow transverse impression close to the apex, the lateral margins sharply carinate. *Scutellum* densely pubescent. *Elytra* oblong-ovate, jointly sinuate at the base, broadly rounded behind, and sparsely clothed with fine recumbent short pale pubescence; the striae shallow and closely set with small round punctures, stria 8 being rather deeper and

1-3 curving outwards at the base; the intervals broad, almost flat, smooth and impunctate, interval 9 being subcostate along the edge of stria 8, especially in ♀.

Length 2·0-2·6 mm., *breadth* 0·9-1·3 mm.

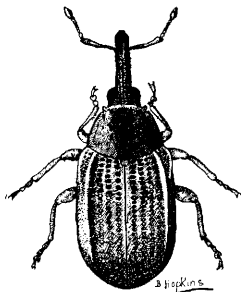
INDIA: Kanasar, 7050 ft., Chakrata Dist., United Provinces, 3 ♂♂, 2 ♀♀, v. 1922 (*S. N. Chatterjee*—type); Bodyar, 8300 ft., Chakrata Dist., 3 ♂♂, 1 ♀, v. 1922 (*Chatterjee*); Dehra Dun, U.P., 1 ♂, iii. 1921 (*Dr. M. Cameron*).

Derelomus bicarinatus, sp. n. (Fig. 2.)

♂ ♀. Very pale testaceous-brown, with the head and rostrum darker; the pronotum with a broad dark brown median stripe.

Head with fine rugulose punctation. *Rostrum* of ♂ about as long as the pronotum, cylindrical, moderately curved, and with five fine low carinæ, the antennæ being inserted at one-

Fig. 2.



Derelomus bicarinatus, sp. n.

fourth from the apex; of ♀, 1·5 times as long as the pronotum, with the carinæ equally distinct and the antennæ inserted at one-third from the apex. *Antennæ* pale testaceous; joint 1 of the funicle about as long as 2-4, 3-7 transverse in ♂, but 7 slightly longer than broad in ♀. *Prothorax* transverse (4:3), widest at the base and gradually narrowing anteriorly, slightly curved at the sides in ♂ and straight in ♀, very deeply constricted near the apex, with the apical angles very prominent and the basal margin broadly arcuate; the dorsum with fine rugulose confluent punctation throughout and with a shallow transverse impression near the apex, the lateral margins sharply carinate. *Elytra* of ♂ broadly ovate, widest behind the middle, shallowly sinuate behind

the shoulders, broadly rounded behind and jointly sinuate at the base; the striæ shallow and distinctly punctate, 1 and 2 curving outwards at the base, and 8 not deeper than the others; the intervals broad and flat, except 5, which is elevated into a high carina from near the base to the top of the declivity, all the intervals impunctate and sparsely clothed with very short recumbent pubescence; elytra of ♀ with the shoulders narrower and more sloping, and the carina on interval 5 much lower. *Legs* concolorous, the front tibiæ with a fringe of hairs on the lower edge in both sexes, but somewhat longer in ♂.

Length 2·6–3·0 mm., *breadth* 1·3–1·5 mm.

INDIA: Bodyar, 8300 ft., Chakrata Dist., United Provinces, 3 ♂ ♂, 2 ♀ ♀, v. 1922 (*S. N. Chatterjee*).

GENUS DERELOMORPHUS, nov.

Closely related to *Derelomus*, Schönh., 1826, but differing from it in the following characters: all the femora bear a stout sharp tooth; the tibiæ are narrow and subcylindrical in the basal half, and nearly twice as broad in the apical half; the prothorax is not carinate on its lateral margins.

Genotype, *Derelomorphus eburneus*, sp. n.

Derelomorphus eburneus, sp. n.

♂ ♀. Uniform pale ivory-yellow, with the head, antennæ, suture, and tarsi darker; rostrum of ♂ blackish; club of antennæ and rostrum of ♀ red-brown.

Head with very fine close punctation, the frons somewhat flattened and with a small median fovea. *Rostrum* in ♂ a little shorter and in ♀ a little longer than the pronotum; in ♂ finely rugulose and with five narrow carinæ, the median one being the most distinct; in ♀ with dense, longitudinally confluent punctures, and the carinæ much less prominent, especially the lateral ones. *Antennæ* inserted at one-fourth from the apex in ♂ and at one-third in ♀; joint 1 of the funicle a little longer than 2+3, 3–7 transverse. *Prothorax* somewhat longer than broad, strongly rounded at the sides, broadest at more than one-third from the base, which is subtruncate, and with a tubular constriction at the apex; the dorsum with fine close (but not confluent) punctation throughout, the lateral margins not carinate. *Elytra* ovate, jointly and shallowly sinuate at the base, and sparsely clothed with fine short recumbent pale pubescence; the rows of

close punctures not or hardly striate and becoming rather indistinct behind and laterally; the intervals closely and irregularly punctate.

Length 2·0–2·2 mm., *breadth* 0·9–1·0 mm.

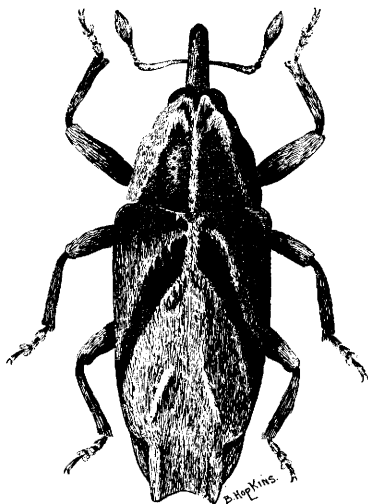
MALAY STATES: Sepang, 2 ♂♂, 7 ♀♀, bred from the male flowers of the coconut-palm, iv. 1928 (*G. H. Corbett*).

Subfamily *CRYPTORRHYNCHINÆ*.

Pachyonyx catechui, sp. n. (Fig. 3.)

♂ ♀. Derm chestnut-brown or piceous-brown, for the most part clothed with close short recumbent grey setæ, which are not sufficiently dense to hide the integument; the

Fig. 3.



Pachyonyx catechui, sp. n.

prothorax with the discal area behind the apical tufts apparently bare, except for a narrow median grey line, the sides grey outwards of a line running from the posterior apical tuft to the base opposite interval 5 of the elytra; the elytra with grey setæ except for an indefinite bare basal patch between striæ 2 and 6, an elongate spear-like stripe running obliquely from close behind the scutellum to the apex of stria 7, and a short bare stripe at the base of interval 10, with some tufts of longer hairs on the disk.

Head with rather fine close unequal punctures and thin grey setæ; the frons flattened, as broad as the base of the rostrum, with a small median fovea and with denser setæ at the sides. *Rostrum* rather strongly curved, parallel-sided, almost bare and coarsely punctate in ♂ on the apical half and with irregular variable carinæ laterally, in the basal half less strongly punctate and rather densely setose; in ♀, much more finely punctate and sparsely setose. *Prothorax* about as long as its basal width, widest at the base, gradually narrowing to beyond the middle, and then rather strongly constricted; the base shallowly bisinuate and with a small excision in the middle; the dorsum with the usual four tufted tubercles towards the apex, and set with large shallow separated punctures that are strongly ocellated. *Scutellum* oblong and scarcely elevated. *Elytra* at the obliquely prominent and rounded shoulders one-third wider than the base of the prothorax, almost parallel-sided from there to the middle, and deeply constricted laterally before the apex, which is subtruncate, with a tufted prominence at the tip of interval 3; the striæ shallow, except at the base, with separated subquadrate punctures, which are much larger on the bare patches and much reduced near the apex, stria 10 very deeply impressed in about the basal fourth, stria 9 similarly impressed for a shorter distance and then with a brief interruption followed by a deep fovea; the intervals narrower than the striæ, with fine shallow punctures, the posterior calli very prominent and with a tuft of recumbent setæ; the apparently bare areas thinly clothed with short recumbent concolorous setæ; a denser stripe of grey setæ running from the base of interval 6 obliquely over the humeral callus as far as interval 10 just below the fovea in stria 9, and a similar stripe on interval 3 from near the posterior callus to the apex; the oblique bare stripe with its lateral edges at the base fringed with long suberect setæ, on intervals 3-5 on the external side and on interval 2 only on the inner side; interval 2 behind the middle with a similar line of long dense suberect setæ running obliquely backwards on to interval 3. *Legs* with fine rugose punctation and densely setose; the hind femur not reaching the apex of ventrite 2, and the hind tibiæ reaching only the apex of ventrite 4.

Length 5.75 mm., *breadth* 2.1 mm.

INDIA: Pusa, Bihar, 3 ♂♂, 1 ♀, vi. 1922 (Haq.).

The insects were bred from galls on twigs of *Acacia catechu*.

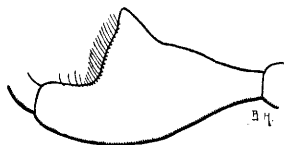
Readily distinguished from the two known Indian species, *P. quadridens*, Chev., 1880, and *P. sulcicollis*, Fst., 1895, by the oblique bare stripe on the elytra with its basal fringes of long setæ.

Subfamily ZYGOPINÆ.

Osphilia vitis, sp. n. (Figs. 4 & 5.)

♂ ♀. Derm red-brown, rather thinly clothed above with greyish-white, yellow, and dark brown setiform scales; the lower surface densely covered with greyish-white scales; the basal half of the rostrum densely clothed with yellowish scales in ♂, very sparsely so in ♀, the apical half honey-brown and bare. The pronotum with a median stripe of yellow scales which is twice as broad in the basal half as it is in the apical half, and a broad indefinite curved lateral

Fig. 4.



Front femur of *Osphilia vitis*, sp. n.

Fig. 5.



Front femur of *Osphilia odinæ*, Marshall.

stripe on each side formed of rather sparse yellow scales; the lateral stripes almost united with the median one along the apical margin and often connected with it at the middle by a few scattered scales. The elytra irregularly variegated with rather sparse, pale yellowish and dark brown scales; interval 1 with dense greyish-white scales, interrupted posteriorly by an elongate patch of dark brown scales, which is as long as the patch of white scales between it and the apex; the extreme lateral margins with a narrow line of whitish or

yellowish scales, and a small bare shining patch on the humeral callus.

Rostrum rather stout, strongly curved, being almost bent at the insertion of the antennæ, as long as the head and pronotum in ♀ and a little shorter in ♂, strongly narrowed from the base to the antennæ and then slightly widening to the apex; the basal half with coarse confluent punctation (finer in ♀) and a smooth median carina, the punctures and carina hidden by scaling in ♂ but not in ♀; the antennal insertion at the middle in ♂ and behind it in ♀. *Antennæ* testaceous, with the club darker; the scape very strongly clavate, and the upper surface of its club with rather dense elongate whitish scales; the funicle with the two basal joints of equal length, 3 as long as broad, and 4-7 transverse. *Prothorax* transverse, gently rounded at the sides, widest behind the middle; the dorsum distinctly convex longitudinally and highest not far from the base, with dense reticulate punctures throughout; the scales narrow and elongate (except some short broad whitish ones along the basal margin) and all lying transversely except those in the basal half of the median stripe, which are longitudinal. *Scutellum* with dense pubescent scales, with their apices directed forwards. *Elytra* with deep striæ containing deep distant punctures, which are separated by more than their own diameter; the intervals broader than the striæ and rather coarsely rugulose; interval 1 with simple setiform scales on the apical half, but those on the basal half are mostly ovate and pubescent; a few pubescent scales at the base of interval 2, but elsewhere all the scales setiform. *Legs* finely rugulose, pale testaceous-brown, fairly densely clothed with narrow elongate pale scales, the hind femora with a large dark subdenuded patch on the clavate part; the front femora much stouter than the others and with a very large triangular tooth, the tooth on the posterior pairs much smaller and spine-like. *Venter* of ♂ with a broad median depression on the basal ventrite that appears dark owing to the individual scales being greatly reduced in size; the anal ventrite with a quadrate bare median impression and a tuft of pale setæ on each side of it at the apex.

Length 3.6-3.9 mm, *breadth* 1.7-1.8 mm.

INDIA: Lachiwala Range, Dehra Dun, U.P., 6 ♂♂, 10 ♀♀, iv. 1921 (*Dr. C. F. C. Beeson*).

The specimens were bred from larvæ boring in the stems of *Vitis latifolia*.

Allied to *O. odinæ*, Mshl., 1921, which differs *inter alia* in having the prothorax almost parallel-sided in the basal half

and without any median pale stripe; the subapical sutural dark patch on the elytra is much shorter than the white area behind it; the tooth on the front femora is spiniform and not triangular, etc.

Osphilia gmelina, sp. n.

♀. Extremely similar superficially to *O. vitis*, sp. n., but slightly stouter in build. The pronotum with the median stripe of sparse yellowish scales (when complete) angularly dilated in the middle and thus forming an elongate diamond, the dark area around more sharply defined and roughly pentagonal; the elytra with patches of pale scales on the extreme lateral margin, but without a continuous pale line, the subapical dark sutural patch shorter than the pale area behind it, which is composed of yellowish (not white) spine-like scales.

Rostrum distinctly longer and less strongly curved than in *vitis*. *Antennæ* with the scape much less strongly and less abruptly clavate, and more sparsely squamose; the funicle with joint 2 appreciably longer than 1. *Elytra* with the intervals rather dull and finely aciculate (shiny in *vitis*) and much less coarsely rugulose, the scales being more numerous, and interval 2 with a row of whitish pubescent scales along its inner edge to beyond the middle. *Legs* with the tooth on the front femora broadly triangular, but with its anterior edge rather strongly curved, so that the point of the tooth projects forwards (in *vitis* the anterior edge is almost straight and the point does not project forwards); on the hind femora of *vitis* there is a small obtuse angulation a little beyond the spine-like tooth, which is lacking in *gmelina*.

Length 4.2–4.5 mm., *breadth* 2.1–2.2 mm.

INDIA: Sitapahar R., Chittagong Hill Tracts, 6 ♀ ♀, v.–viii. 1925 (*Dr. C. F. C. Beeson*).

The insects were bred from the wood of *Gmelina arborea*.

Phylaitis grewia, sp. n.

♂ ♀. Derm piceous or black; the head below the eyes with a patch of large buff-coloured scales; the rostrum with smaller buff scales at the sides near the base, and a triangular dorsal patch of narrower whitish scales between the eyes; the pronotum with a patch of large pale buff scales in the anterior lateral angles, within these a broad abbreviated stripe of paler narrower scales, and in the middle of the

front margin a short narrow median stripe of still narrower pale scales, along the basal margin a longitudinal patch of broad buff and white scales in the middle, with a patch of dark brown scales on each side of it, and outside of these a transverse patch of broad buff scales, the disk set with sparse small pale scales, leaving four indefinite darker patches, which bear brown scales; the scutellum with pubescent whitish scales; the elytra sparsely set with small pale buff and whitish scales and with a very indefinite broad oblique dark band (bearing brown scales) running from behind the shoulder to about the middle of the suture, and a still more indefinite small dark patch about the posterior callus, the punctures in the striæ each containing a large scale, which is brown on the dark areas and pale buff elsewhere; the lower surface densely clothed with large buff and whitish scales in varying proportions, but brown scales predominating laterally on the basal half of the metasternum.

Rostrum of ♂ stout, in large examples distinctly longer proportionately and more curved than that of ♀, but not in small specimens, closely and strongly punctate throughout, the punctures very rugose in the basal half, where there are five rather indefinite sinuous carinæ; the sculpture similar, but rather less coarse in ♀. *Antennæ* red-brown, inserted at about the middle of the rostrum in ♀ and well beyond the middle in ♂; joint 1 of the funicle slightly longer than 2 and both with white setiform scales, and joint 7 (attached to the club) strongly pedunculate, as long as the club, and with white setiform scales at the base. *Prothorax* broader than long (5:4), rounded at the sides anteriorly, widest much beyond the middle, abruptly constricted and subtubulate at the apex, the sides almost straight in the posterior half; the dorsum strongly convex longitudinally in large ♂ and highest at one-fourth from the base, less convex in ♀ and small ♂, with deep reticulate punctation throughout, each puncture containing a broad scale. *Elytra* subtriangular, transversely impressed at the base and with the basal margin elevated between striæ 1 and 5, the sutural area depressed in the basal half and not elevated behind, and the apical margin finely denticulate; the striæ deep, each puncture being covered by an oblong scale; the intervals broader than the striæ, rugulose, and each with a spaced row of small shiny granules, all of the same height, and without spines in ♂. *Legs* rugosely punctate and with mingled oblong white and buff scales; all the femora with a low carina on the outer and inner faces and with a small lobe beyond the tooth; the tibiæ sinuate dorsally on the apical

half; the front tarsi of ♂ fringed with long hairs. *Sternum* of large ♂ with the prosternal spines stout and strongly curved, the hollow between them broad, very deep and entirely bare; in small ♂, the spines shorter, the hollow between them much shallower and densely clothed with broad suberect scales. *Venter* of ♂ with a deep median depression on the basal ventrite; the anal ventrite not impressed and bare at the apex.

Length 5·7–6·0 mm., *breadth* 2·3–2·5 mm.

INDIA: Jhajra Range, Dehra Dun, United Provinces, 8 ♂ ♂, 3 ♀ ♀, 6. xi. 1924, bred from stems of *Grewia vestita* (C. F. C. Beeson).

Most nearly allied to *P. pterospermi*, Mshl. (Bull. Ent. Res. xv. 1925, p. 342, pl. xvi. fig. 5*), which differs in the pinkish colour of the prosternum, the more slender, less strongly punctate and more distinctly carinate rostrum, and in the dense setiform clothing of the prosternal fovea of the ♂.

Subfamily CALANDRINÆ.

Trochorrhopalus dipterocarpi, sp. n. (Fig. 6.)

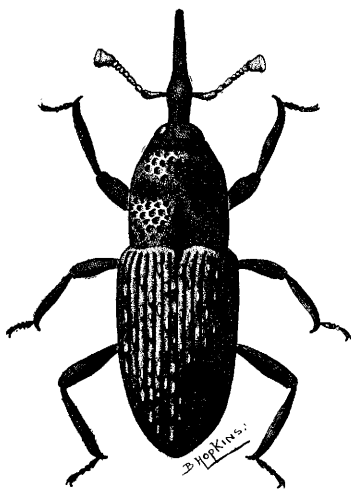
♂ ♀. Dull black or piceous, often covered with a dense earthy incrustation; the elytra with numerous small irregular patches of short golden hairs.

Head impunctate, except for a few small shallow punctures on the lower surface; the eyes distinctly separated beneath (0·05 mm.). *Rostrum* about as long as the pronotum, rather strongly curved, subparallel-sided at the base, roundly dilated above the insertion of the antennæ, thence gradually narrowing to beyond the middle, and again slightly widening to the apex; ♂ with the sculpture on the basal half hidden by an indumentum, except for a shallow longitudinal furrow on each side of the dilated area, the apical half with more or less confluent punctures leaving a narrow abbreviated smooth median line; ♀ with the lateral furrows obsolete, the punctures on the apical half smaller and separated, and without any definite median line. *Antennæ* with the two basal joints of the funicle subequal, joints 3–6 transverse, and the club a little longer than broad. *Prothorax* longer than broad, subparallel-sided from the base to the middle, then roundly narrowing to the apex and with a distinct apical constriction; the dorsum somewhat uneven, closely set with

* In the explanation of this plate the names of the two species of *Phylaitis* have been erroneously transposed; the references in the text are correct.

very large deep reticulate punctures and sometimes with a feeble median longitudinal impression in the basal half; the punctures always filled with and sometimes obliterated by an earthy incrustation. *Scutellum* small, oval, and flat. *Elytra* elongate-ovate, in ♀ widest at the obliquely rounded shoulders and very gradually narrowing behind, rather more parallel-sided in ♂, and with a distinct subapical impression on each side (often obscured); the striae distinct throughout and containing shallow-spaced punctures which are slightly wider than the striae; the intervals broader than the striae, slightly convex and uneven, each with a row of varying tufts

Fig. 6.

*Trochorrhopalus diptercarpi*, sp. n.

of dense short recumbent golden setae, the alternate intervals being slightly higher at the base only. *Legs* covered with a dense brown indumentum having a grey sheen; the femora sparsely set with short subrecumbent golden setae, which become erect on the lower face; the tibiae with three dorsal lines of recumbent golden setae and one on each side. *Underside* with a fine grey pubescent sheen and set with large separated punctures, each having a short curved seta on its anterior edge; the three intermediate ventrites with a single transverse row of longer erect setae, the last ventrite with a large patch of dense erect setae in the middle.

Length 6.6–9.6 mm., *breadth* 2.4–3.5 mm.

BURMA : Okkan Reserve, Insein, 2 ♂♂, 3 ♀♀, 2. i. 1927 (D. J. Atkinson).

The insects were bred from the wood of *Dipterocarpus alatus*.

The genotype, *T. strangulatus*, Gyll., 1837, differs from the present species in its more flattened elytra, the intervals on which lack the setose patches and the alternate ones are more elevated throughout their length. Moreover, in *strangulatus* the eyes are contiguous beneath; the antennal club is slightly broader than long; the punctures on the pronotum are much smaller, separated and not reticulate, and the median impression is much stronger; the setæ on the last ventrite are subrecumbent and not erect, etc.

Subfamily COSSONINÆ.

Himatium tectonæ, sp. n.

♂ ♀. Colour red-brown, with stout pale setæ.

Head very convex, rising abruptly from the base of the rostrum and separated from it by a shallow transverse impression containing two short erect spatulate setæ; the forehead rather coarsely punctate and with fairly dense recumbent yellowish setæ, the vertex with very shallow fine confluent punctures. *Rostrum* quite straight; in ♂, a little more than twice as long as wide and rugosely punctate throughout, the punctures being longitudinally confluent dorsally in the basal half; in ♀, of the same length but rather narrower, the dorsal punctures being finer and not confluent except close to the base. *Antennæ* with the club comparatively small, about as long as the last three joints of the funicle, and thinly clothed with setæ. *Prothorax* longer than broad (4:3), only slightly rounded laterally, widest at one-fourth from the base, gradually narrowing in front, and with a deep constriction near the apex, which is continued across the dorsum; the apical margin without any fringe of dense white setæ; the dorsum somewhat flattened in the middle, set with very shallow large reticulate punctures, which are rather larger than those on the elytra, and with fairly dense, narrow, transversely recumbent, yellowish setæ, interspersed with suberect curved spatulate setæ. *Elytra* somewhat broader at the shoulders than the prothorax, flattened dorsally as far as stria 3, the striæ containing strong subquadrate punctures; the intervals flat and not wider than the striæ, each with a single row of recumbent pointed setæ intercalated with a row of curved suberect

spatulate setæ, the latter wanting only on intervals 2, 4, 6 from the base to beyond the middle.

Length 2·0–2·5 mm., *breadth* 0·7–0·8 mm.

JAVA: Semarang, 2 ♂♂, 2 ♀♀, 21. ix. 1927 (*L. G. E. Kalshoven*).

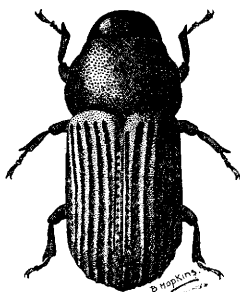
The adult beetles were found in crevices in the bark of teak (*Tectona grandis*).

Very closely related to *H. asperum*, Mshl., 1913, from Assam, which differs *inter alia* as follows:—The rostrum is distinctly broader proportionately and has four erect setæ at its base; the head is more distinctly punctate; the antennal club is larger and densely setose, being about as long as the last five funicular joints; the prothorax bears much smaller punctures (not larger than those on the elytra) with wider interspaces, and the apical margin has a very short dense white fringe except for a short distance on the dorsum.

Brachytemnus ruptus, sp. n. (Fig. 7.)

Black or piceous, the head and prothorax rather shiny, the elytra opaque with only the costæ shiny; the antennæ and tarsi red-brown.

Fig. 7.



Brachytemnus ruptus, sp. n.

Head with the vertex alutaceous and with fine sparse punctures; the forehead with strong reticulate punctures, which are much wider than the intervals between them and become longitudinally confluent in front; the eyes quite flat, the space between them as wide as the base of the rostrum. *Rostrum* much broader than long, not conical but parallel-sided, or even slightly widening to the apex, with the apical margin asymmetrically produced to the right of the middle; the scrobe much widened behind, its upper margin running to about the lower fourth of the eye; the

two median setæ on the submentum very short; the dorsum with rugose, longitudinally confluent punctures, appearing more or less carinulate. *Antennæ* with the club almost circular. *Prothorax* transverse (7:5), broadest near the base and gradually narrowing in front as far as the abrupt apical constriction, the sides being more or less sinuate in the middle and the basal angles rounded; the dorsum highest at the base and sloping forwards with a slight curve, with rather small shallow punctures that diminish but little in front, the interspaces feebly alutaceous and for the most part only slightly narrower, or even broader, than the punctures. *Scutellum* obsolescent. *Elytra* subcylindrical, slightly widening behind, twice as long as the pronotum, with rather broad sulci, which are for the most part opaque and gradually widen towards the apex; sulci 1-4 not nearly reaching the base, which is here set with rasp-like transverse granules; in sulci 1 and 2 and on the apical half of 3-6 the punctures are quite small, separated and diminishing posteriorly; in the basal half of sulci 3-5 the punctures are much larger and subquadrate, being separated by narrow transverse ridges; in the basal half of 6-8 the sulcus disappears, being replaced by a row of large punctures; the intervals mostly wider than the sulci near the base but gradually becoming much narrower behind, strongly costate and somewhat irregularly punctate, but the punctures often arranged in two rows, one on each side of the costa alternating with the other; intervals 1 and 2 broadly dilated towards the base and there coarsely punctate, the punctures changing to asperate granules basally; posteriorly, interval 1 disappears entirely at the top of the declivity, being represented behind only by a row of minute punctures; the remaining intervals only with minute obsolescent granules on the declivity, and with merely microscopic setæ. *Legs* shiny; the femora rather sparsely punctate, and with short golden setæ on the lower parts. *Underside* with the punctures on the sternum and basal ventrite rather sparse (interspaces broader than punctures), and those on the other ventrites more dense; the mesosternal process much broader than usual, being about as broad as long.

Length 3.6-4.2 mm., *breadth* 1.5-1.8 mm.

INDIA: Nambor Reserve, Sibsagar, Assam, 12 specimens from *Dysoxylum binectariferum*, 3. v. 1921 (Dr. C. F. C. Beeson).

Readily distinguished from all the other known species of the genus by its parallel-sided rostrum, the broad mesosternal process, and the smooth space on the declivity of the elytra between the suture and interval 2.